



**THE RIVERSIDE CHURCH**  
IN THE CITY OF NEW YORK

490 Riverside Drive  
New York, NY 10027

[www.trcnyc.org](http://www.trcnyc.org)

[rentals@trcnyc.org](mailto:rentals@trcnyc.org)  
[weddings@trcnyc.org](mailto:weddings@trcnyc.org)

212.870.6700



## THE RIVERSIDE CHURCH

### IN THE CITY OF NEW YORK

---

The Riverside Church is situated at one of the highest points of New York City, overlooking the Hudson River.

Construction began in 1927 with the doors opening on October 5, 1930.

The 20-floor tower, rising to a height of 392 feet, contains offices, meeting rooms, and the 74-bell Laura Spelman Rockefeller Memorial Carillon.

The Carillon's 20-ton Bourdon bell is the largest turned bell in the world.

The smallest bell in our Carillon weighs 10 pounds.

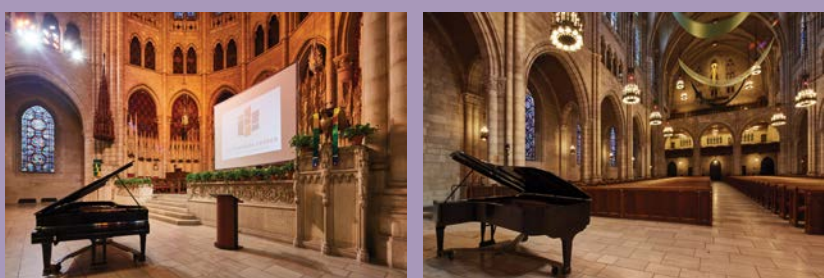




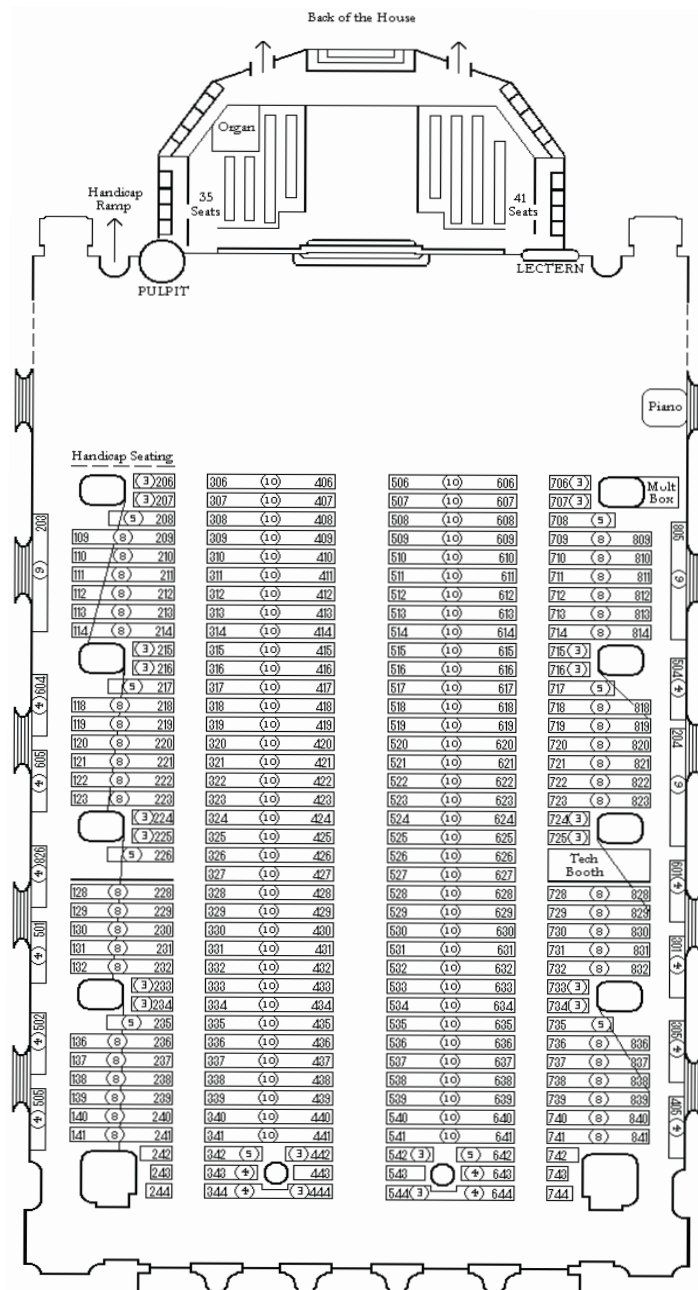
# NAVE

The splendor of our main chapel, designed in the 13th Century Gothic architectural tradition of Chartres Cathedral in France cannot be surpassed. With its beautiful stained glass windows, vaulted ceiling and ornate carvings, the Nave serves as a space for book launches, concerts, conferences, funerals, lectures, meetings, memorials, weddings and more.





The Nave seats 1400 on ground level and 350 on each of our two balconies



Main Area - 142 x 87 = 12,354 Sq Ft

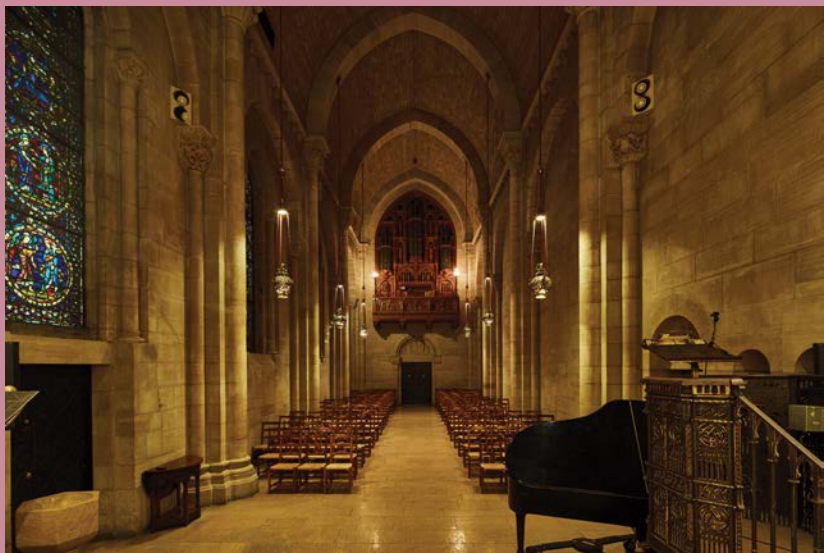
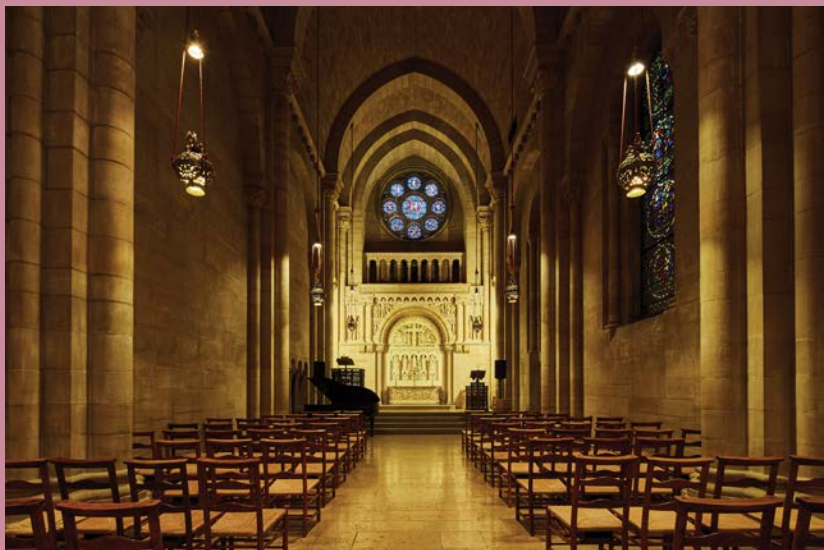
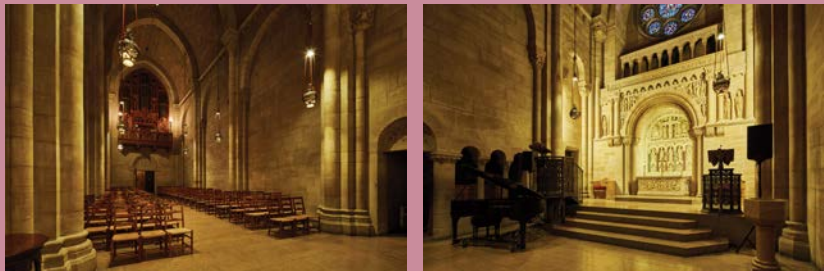
Chancel - 50 x 22 = 1100 Sq Ft



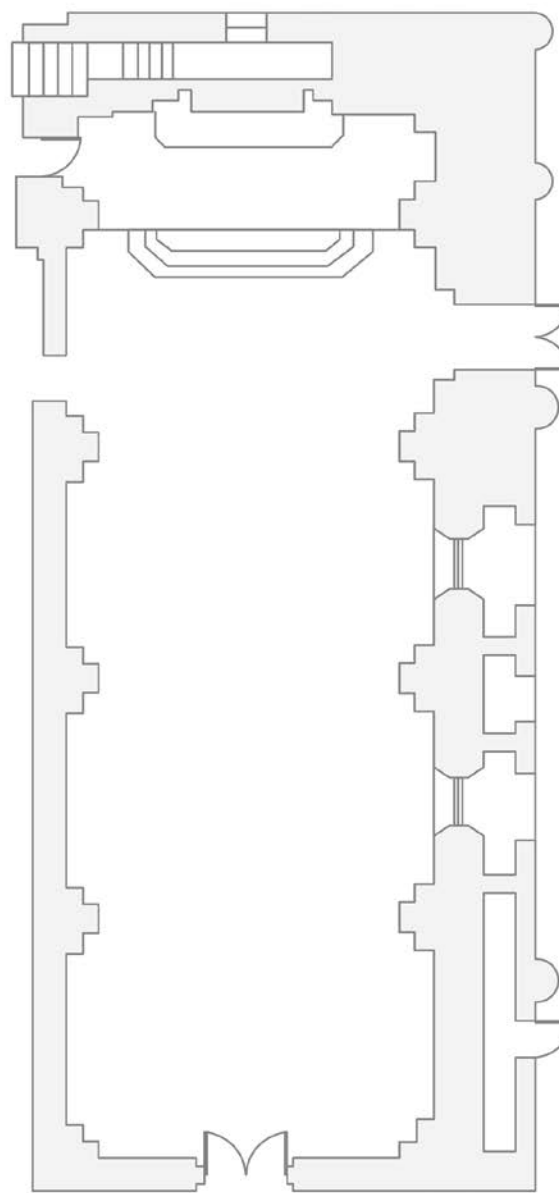


# CHRIST CHAPEL

Christ Chapel is patterned after the nave of the eleventh century Basilica of Saints Nazarius and Celsus at Carcassonne, which was built in the Gothic-Romanesque architectural tradition and serves as a space for funerals, memorials, recitals, and small, intimate weddings.



Christ Chapel seats 130 people.



Area -  $32 \times 74 = 2368$  Sq Ft  
Ceiling Height - 31 ft 4 in



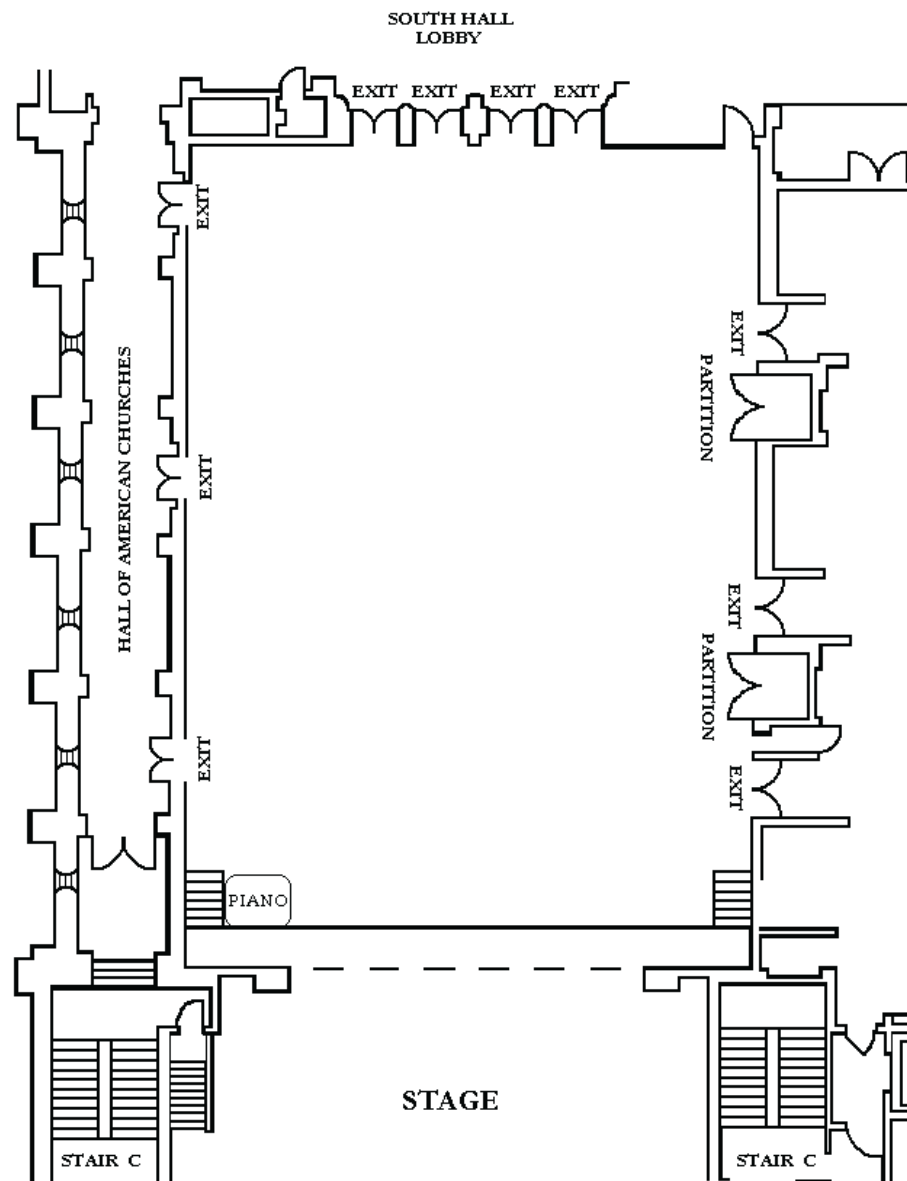


# SOUTH HALL

South Hall measures 86 feet in length and 62 feet in width and comes with a full stage and lobby.

South Hall serves as a multi-purpose space.

(Art exhibits / galleries, conferences, dinner auctions, galas, plays/performances, meetings, etc.)



Main Area - 64 x 96 = 6144 Sq Ft

Stage - 26 x 61 = 1586 Sq Ft

Ceiling Height - 27 ft 8 in

Please inquire about capacity.

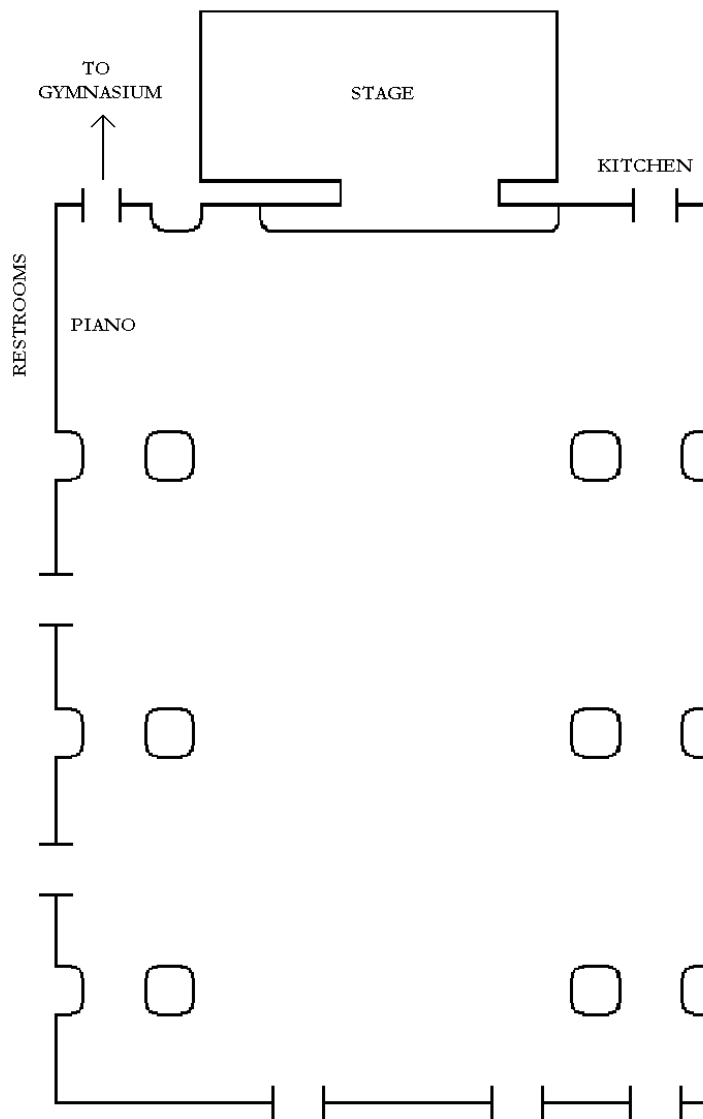
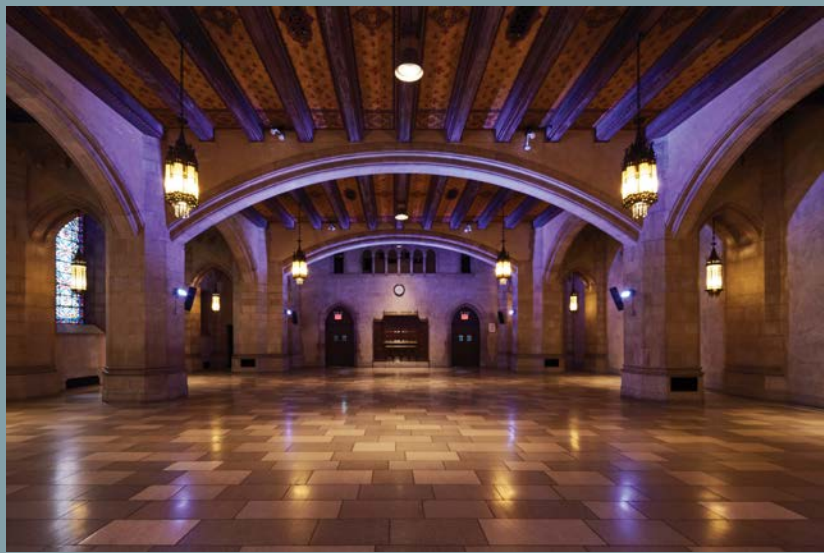
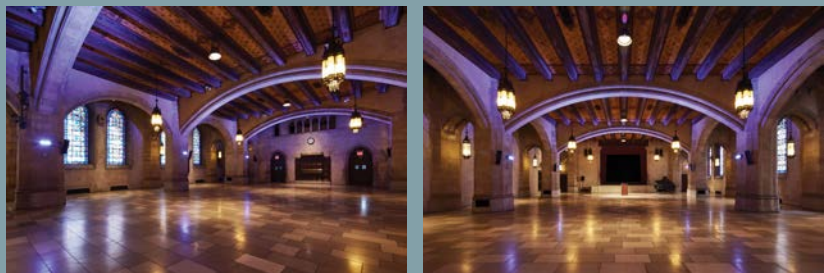




# ASSEMBLY HALL

Assembly Hall is styled in the Gothic-style space with soaring stone pillars, and an ornate ceiling.

Assembly Hall includes a stage and serves as a multi-purpose space.



Main Area -  $62 \times 86 = 5332$  Sq Ft

Stage -  $18 \times 35 = 630$  Sq Ft

Ceiling Height - 22 ft

Please inquire about capacity.

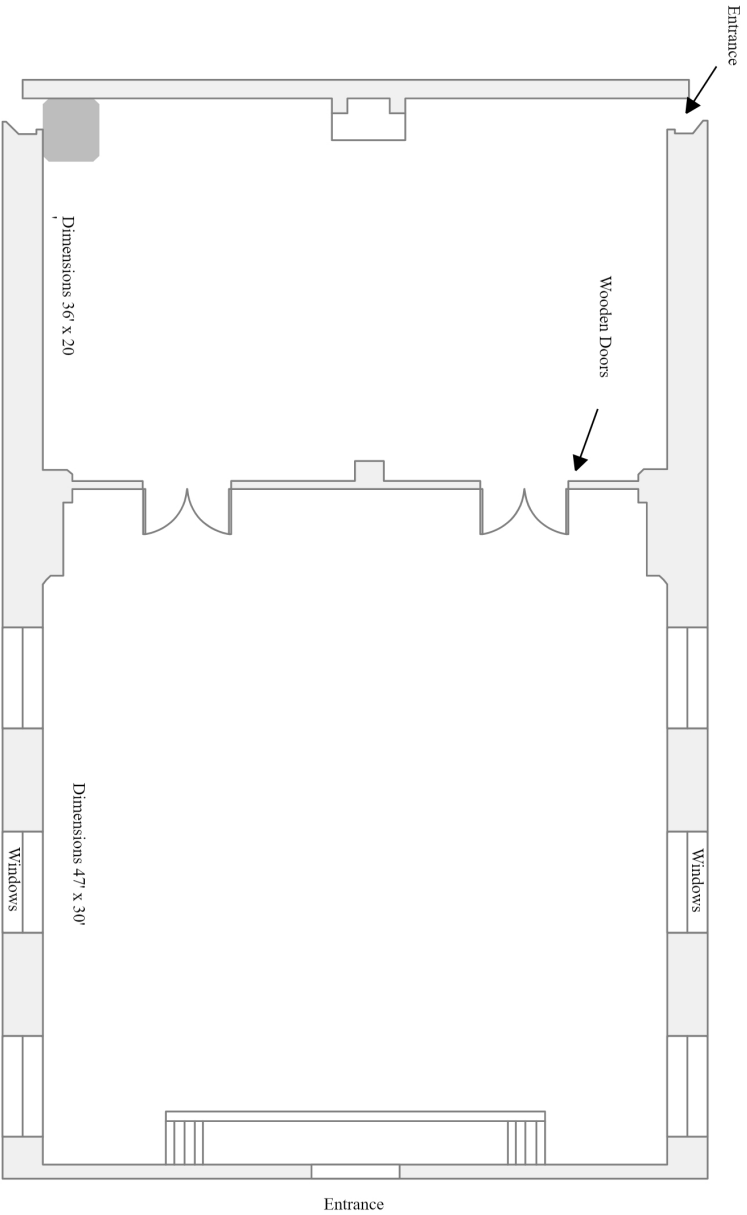




# 411 MLK CLASSROOM

Practical light flooded space located in our MLK Conference Center.

Amenities: Steinway grand piano, views east and west out oversized windows, sliding wood doors for additional flexibility







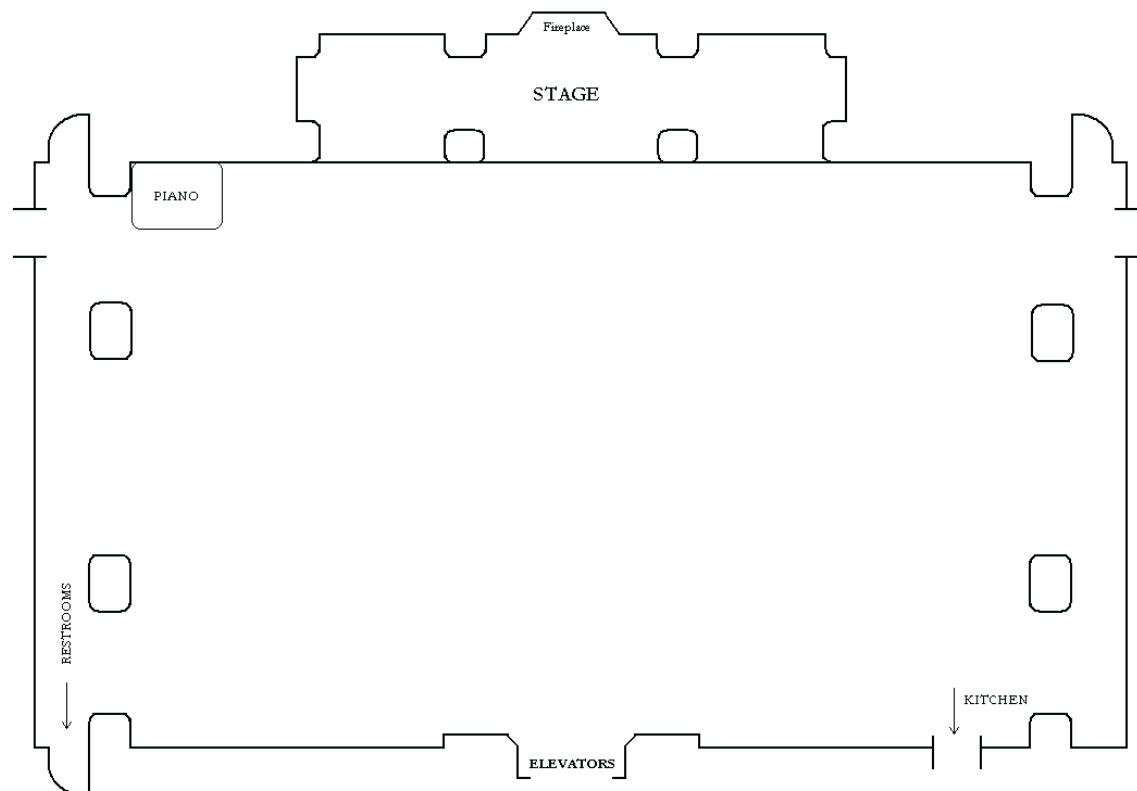
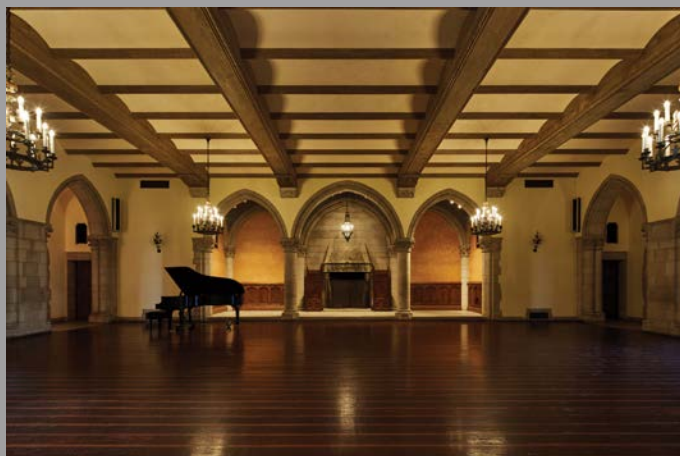
# NINTH FLOOR LOUNGE

This gothic-inspired hall with its ornate ceiling and beautiful wooden floor evoke memories of the elegance of eras past.

Bountiful windows provide spectacular views of the Hudson River to the west and views of upper Manhattan and the Bronx to the east.

Both lounges serve as multi-purpose spaces.

The slightly larger Ninth Floor Lounge has its own wood-burning fireplace.



Main Area - 66 x 37 = 2442 Sq Ft

Stage - 30 x 8 = 240 Sq Ft

Ceiling Height - 17 ft 2 in

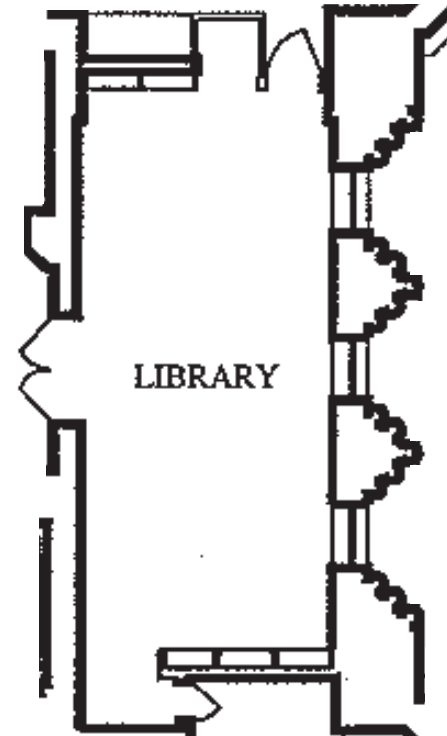
Accommodates a party of 100  
for a formal sit-down dinner.





# NINTH FLOOR LIBRARY

Located across from the 9th Floor Lounge, this intimate wood paneled room accommodates 12-15 conference style and boasts magnificent views of the Hudson River.



Main Area - 13' x 33'



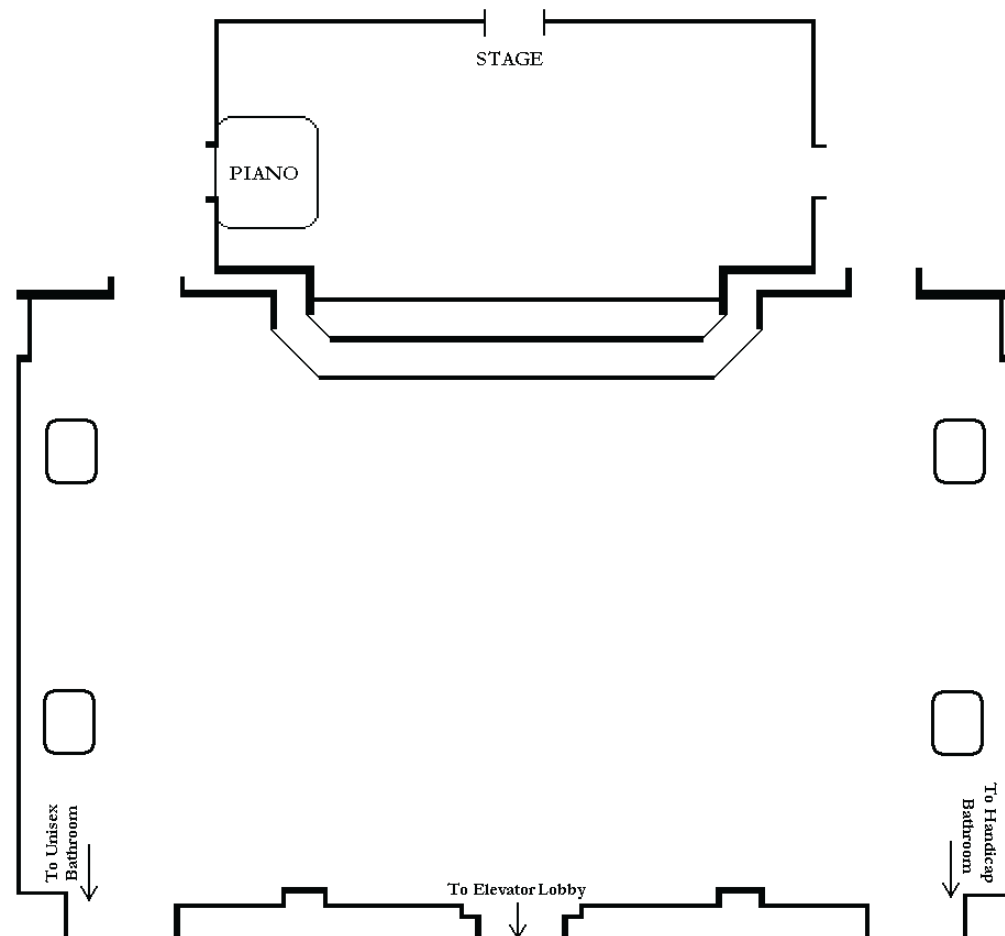


# TENTH FLOOR LOUNGE

This gothic-inspired hall with its ornate ceiling and beautiful wooden floor evoke memories of the elegance of eras past. Bountiful windows provide spectacular views of the Hudson River to the west and views of upper Manhattan and the Bronx to the east.

Both lounges serve as multi-purpose spaces.

The smaller Tenth Floor Lounge offers all the same intimate ambiance.



Main Area -  $66 \times 32 = 2112$  Sq Ft

Stage -  $34 \times 14 = 476$  Sq Ft

Ceiling Height - 11 ft 10 in

Accommodates a party of 75  
for a formal sit-down dinner.



### **In House Venue Rentals**

Fire Place (9T)  
Gold Chiavari Chairs  
Lighting Packages  
Music Stand Lights  
Music Stands  
Nave Full Stage  
Nave Half Stage  
Organist  
Podiums  
Preferred Caterers \*please inquire  
South Hall Full Stage  
South Hall Half Stage  
South Hall Video Platforms  
Steinway Baby Grand Pianos

### **In House Portable Equipment**

12x14 Screen-16:9 aspect ratio  
8x12 Screen-16:9 aspect ratio  
Audio Engineer  
Camera Operator  
Conference Room Phone  
Internet Hardwire  
Laptops  
Livestreaming  
NEC projector 8,000 Lumens  
Optimum Projector 4,500 Lumens  
Samsung 48" Flat Screen HD TV  
Samsung 75" Flat Screen HD TV  
Tricaster Director  
Video Editor  
Wireless Lavaliers

## Lighting Package

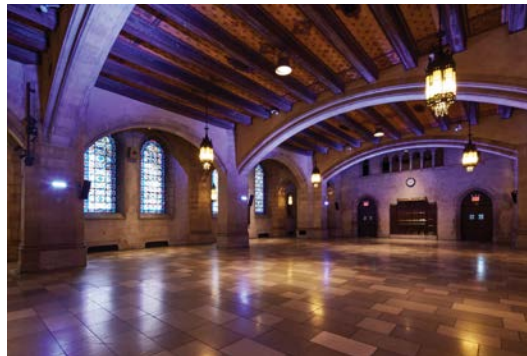
The Portable Package is a great use to add a little atmosphere and design in your room for any Gala, Wedding, Party, Film Screening, etc. The Package includes the following:

- Professional Lighting Design
- Equipment

Any special gobos can be ordered by LD, however the items must be paid by client

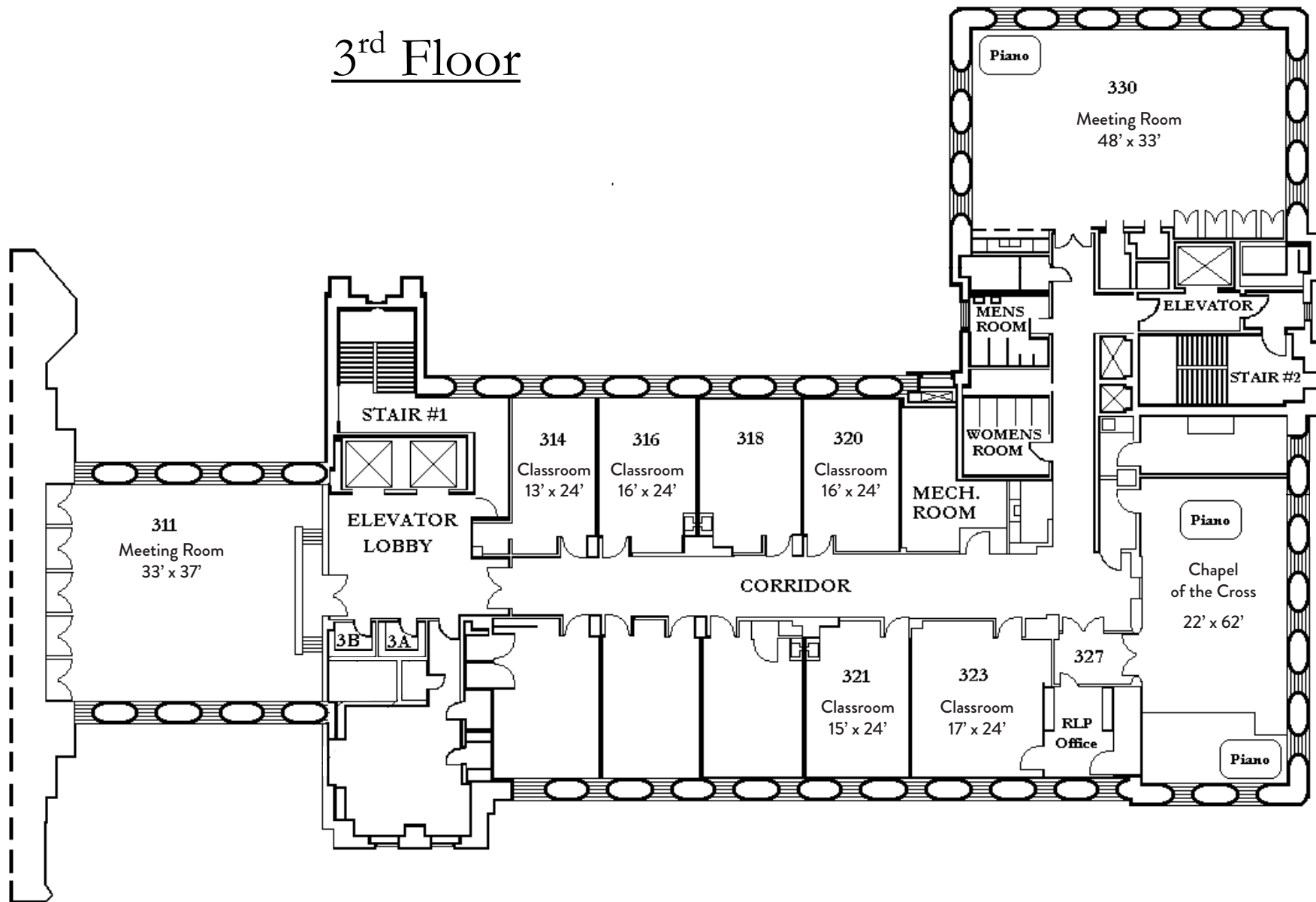
- 2 –Electricians for 8 Hours (4 Hours for Load In and 4 Hours for Load Out)

This does not include technicians for your event





## 3<sup>rd</sup> Floor





# THE THEATER

The Theater at the Riverside Church is a traditional Proscenium Theater perfect for performance and film screenings. It features an Apron extension and false proscenium legs masked by soft goods, creating a full downstage of curtain line with exits stage right and left.

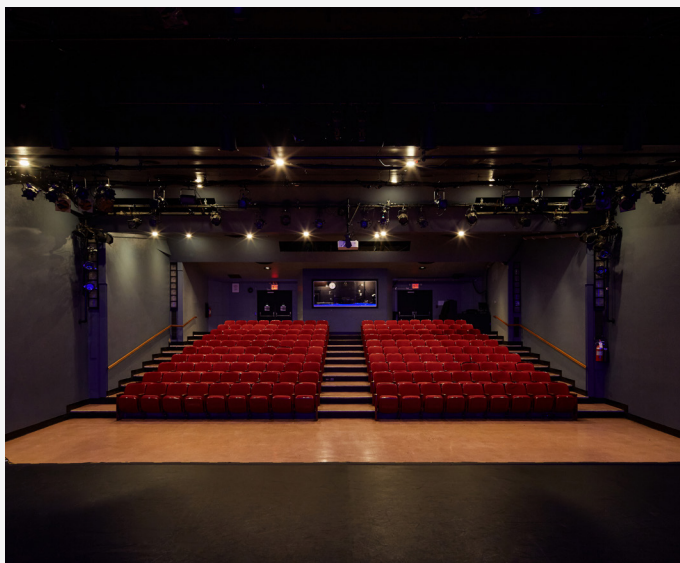
There is an audio and video booth, and separate lighting booth, both located in the back of the house with full view of the stage.

Two dressing rooms backstage left accommodate 10-15 people each and come equipped with toilets, hot and cold sinks, and lit make up mirrors.

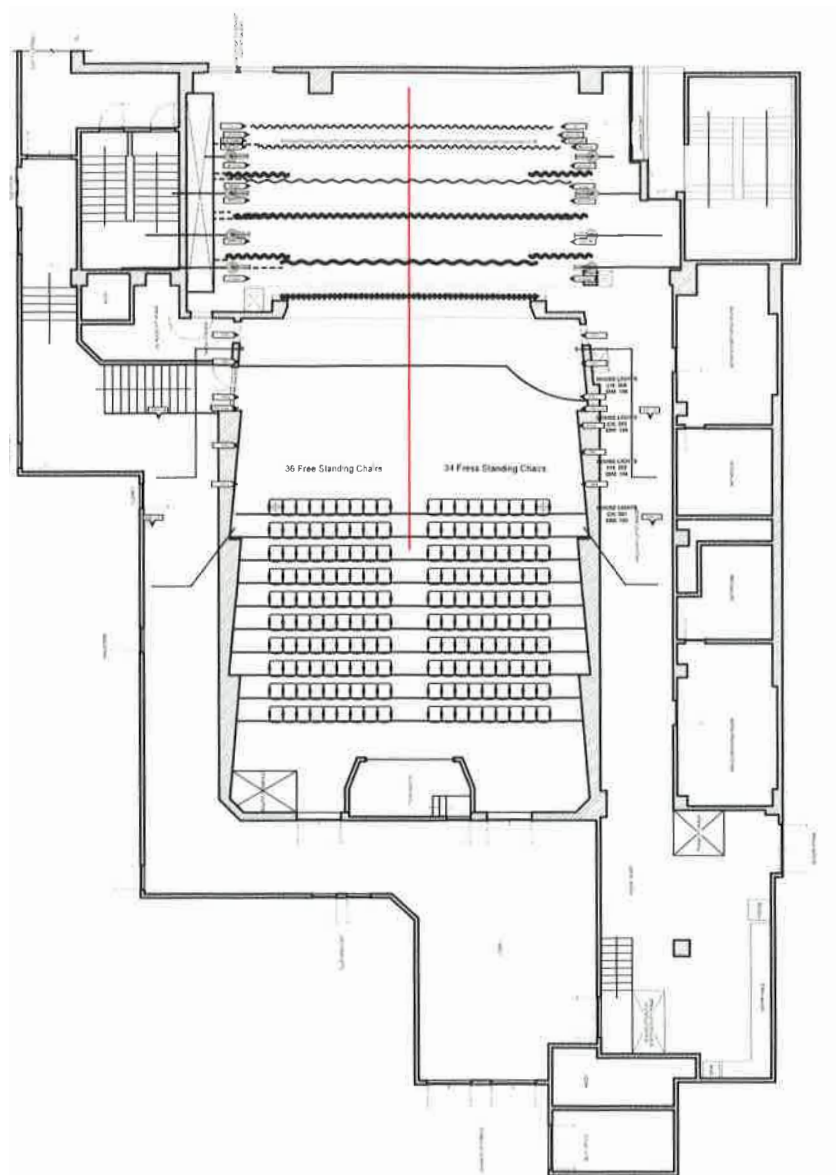
An additional green room is located down the hall from the theater, to accommodate larger casts.

The theater has a wide variety of lighting visual, and audio equipment available, which can be further discussed upon request.





Total seating capacity is 250:  
180 raked and 70 freestanding  
with option for removal.



False Proscenium Width: 35'-0"  
Proscenium Width: 30'-0"  
DS Apron Edge to Plaster Line Depth: 8'-0"  
Down Stage Apron Edge to Cyc Depth: 32'-0"

## **Cloister Theater Technical Rider**

Traditional Proscenium Theatre with an apron extension and false proscenium legs, there are 2 exits located down stage of the curtain line. They are stage left and stage right. There are a total of 250 seats, 180 are raked seats and 70 seats are free standing. The 70 free standing seats are located in the front of theatre. The lighting booth is located at the rear of the theatre on center line with a full view of the stage. The booth comes equipped with stage manager monitors, glass windows that may be opened upon request. Dressing rooms are located stage left to accommodate 10-15 people; both are equipped with toilets, hot and cold sinks, and make-up mirrors.





**THE RIVERSIDE CHURCH**  
IN THE CITY OF NEW YORK